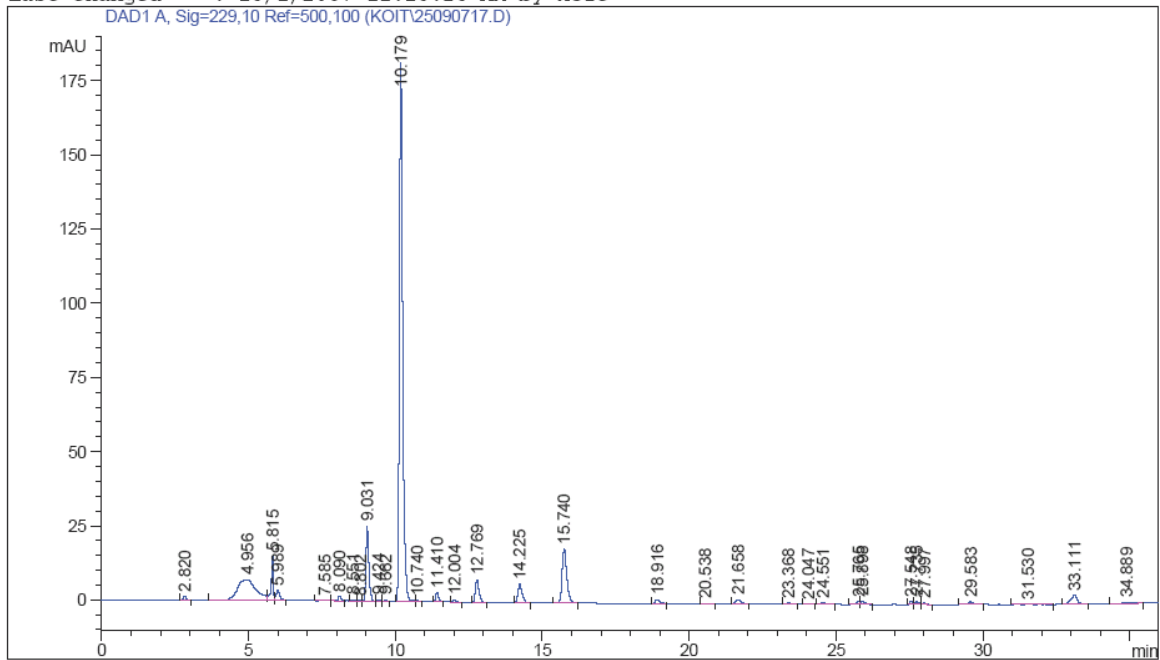


```

=====
Injection Date   : 9/27/2007 2:21:08 AM           Seq. Line :   14
Sample Name     : 7056                           Location  : Vial 69
Acq. Operator  : karin                           Inj       :    1
Acq. Instrument : Instrument 1                    Inj Volume: 20 µl
Acq. Method    : D:\METHODS\GLY01.M
Last changed   : 9/26/2007 3:46:46 PM by karin
Analysis Method: C:\HPCHEM\1\METHODS\GLS.M
Last changed   : 10/1/2007 11:16:26 AM by koit
=====

```



=====  
Area Percent Report  
=====

```

Sorted By           : Signal
Calib. Data Modified : Monday, October 01, 2007 11:12:07 AM
Multiplier          : 1.0000
Dilution            : 1.0000
Use Multiplier & Dilution Factor with ISTDs

```

Signal 1: DAD1 A, Sig=229,10 Ref=500,100

Peak #	RetTime [min]	Type	Width [min]	Area [mAU*s]	Area %	Name
1	4.500		0.0000	0.00000	0.0000	glucoiberin
2	9.031	VV	0.1031	172.66626	6.6908	progoitrin + epi-progoitrin
3	9.424	VV	0.0962	4.47633	0.1735	glucoraphanin
4	10.179	VV	0.1199	1428.40100	55.3508	sinigrin
5	11.410	BB	0.1103	23.29408	0.9026	glucoalyssin
6	12.004	BB	0.1262	6.65523	0.2579	gluconapoleiferin
7	14.225	BB	0.1485	61.27623	2.3745	gluconapin
8	15.740	BB	0.1653	198.20972	7.6807	4-hydroxyglucobrassicin
9	18.916	PB	0.1721	16.73156	0.6484	glucobrassicinapin
10	21.658	PB	0.1800	17.77274	0.6887	glucobrassicin
11	24.551	BB	0.1916	6.37733	0.2471	gluconasturtiin

Totals : 1935.86048 75.0149

Results obtained with enhanced integrator!  
2 Warnings or Errors :