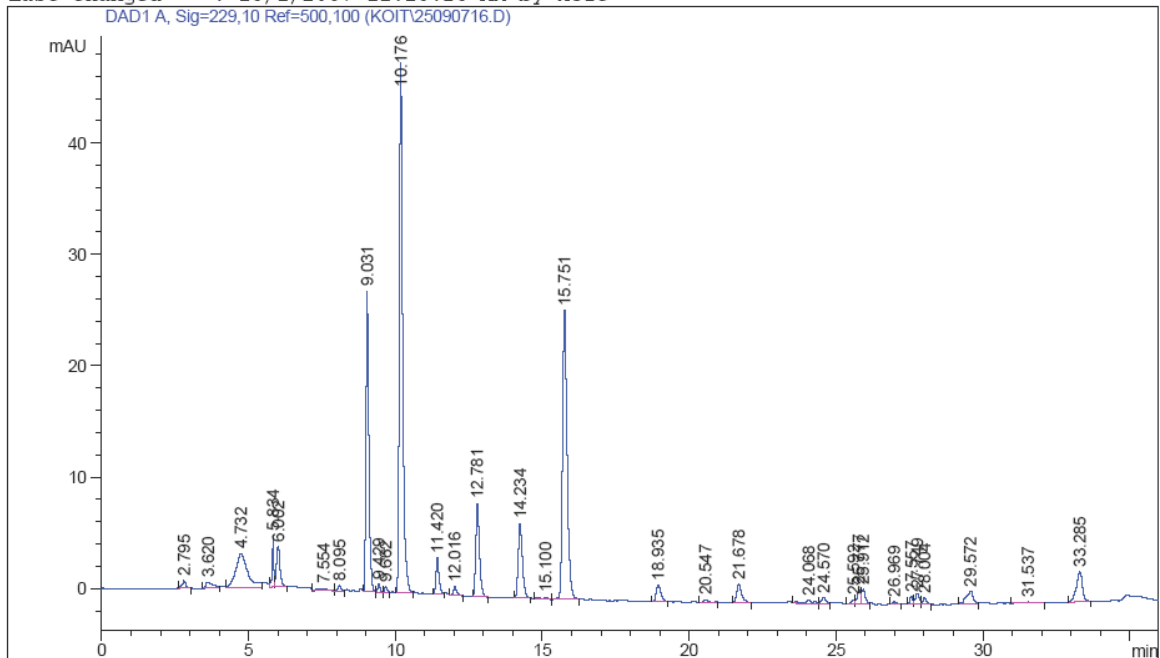


```

=====
Injection Date   : 9/27/2007 1:33:31 AM           Seq. Line :   13
Sample Name     : 7055                           Location  : Vial 68
Acq. Operator  : karin                           Inj       :    1
Acq. Instrument : Instrument 1                    Inj Volume: 20 µl
Acq. Method    : D:\METHODS\GLY01.M
Last changed   : 9/26/2007 3:46:46 PM by karin
Analysis Method: C:\HPCHEM\1\METHODS\GLS.M
Last changed   : 10/1/2007 11:16:26 AM by koit
=====

```



```

=====
                          Area Percent Report
=====

```

```

Sorted By           :      Signal
Calib. Data Modified :      Monday, October 01, 2007 11:12:07 AM
Multiplier          :      1.0000
Dilution            :      1.0000
Use Multiplier & Dilution Factor with ISTDs

```

Signal 1: DAD1 A, Sig=229,10 Ref=500,100

Peak #	RetTime [min]	Type	Width [min]	Area [mAU*s]	Area %	Name
1	4.500		0.0000	0.00000	0.0000	glucoiberin
2	9.031	VV	0.1026	182.12134	13.5604	progoitrin + epi-progoitrin
3	9.429	VV	0.0931	4.65029	0.3463	glucoraphanin
4	10.176	VB	0.1201	376.31403	28.0196	sinigrin
5	11.420	PB	0.1112	23.66615	1.7621	glucoalyssin
6	12.016	BP	0.1206	6.08383	0.4530	gluconapoleiferin
7	14.234	BB	0.1477	65.01506	4.8409	gluconapin
8	15.751	VB	0.1633	278.63983	20.7470	4-hydroxyglucobrassicin
9	18.935	PB	0.1740	17.20122	1.2808	glucobrassicinapin
10	21.678	BP	0.1834	19.93371	1.4842	glucobrassicin
11	24.570	VV	0.1800	6.57504	0.4896	gluconasturtiin

Totals : 980.20049 72.9839

Results obtained with enhanced integrator!
 2 Warnings or Errors :