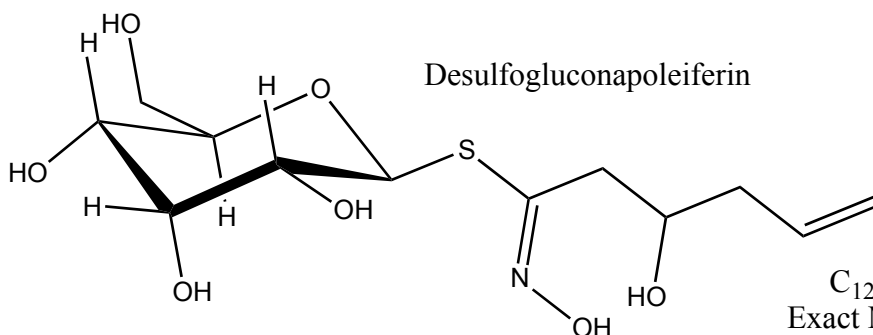


$C_{12}H_{23}NO_7S_2$
 Exact Mass: 357.09
 Mol. Wt.: 357.44

m/e: 357.09 (100.0%), 358.09 (15.3%), 359.09 (9.1%), 359.10 (2.3%),
 360.09 (1.3%)

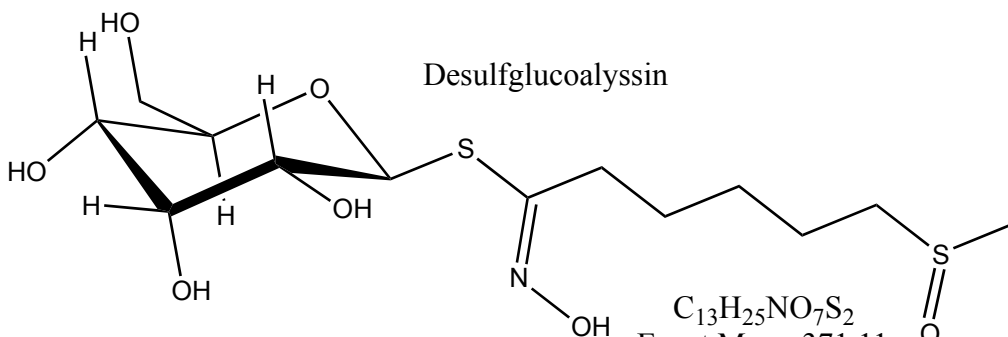
C, 40.32; H, 6.49; N, 3.92; O, 31.33; S, 17.94



$C_{12}H_{21}NO_7S$
 Exact Mass: 323.10
 Mol. Wt.: 323.36

m/e: 323.10 (100.0%), 324.11 (13.9%), 325.10 (4.5%), 325.11 (2.4%),
 324.10 (1.2%)

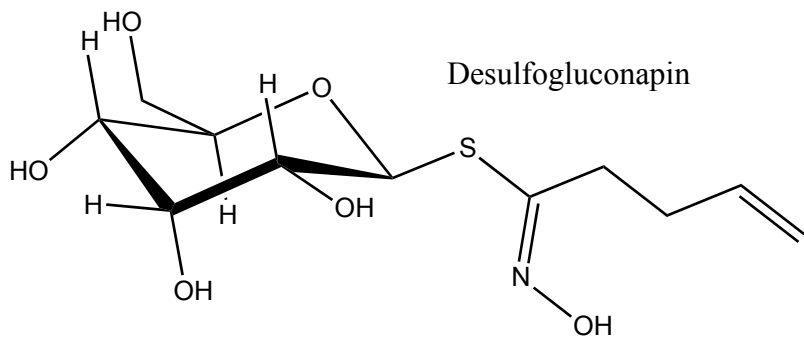
C, 44.57; H, 6.55; N, 4.33; O, 34.63; S, 9.92



$C_{13}H_{25}NO_7S_2$
 Exact Mass: 371.11
 Mol. Wt.: 371.47

m/e: 371.11 (100.0%), 372.11 (16.7%), 373.10 (8.9%), 373.11 (2.7%), 374.11 (1.6%)

C, 42.03; H, 6.78; N, 3.77; O, 30.15; S, 17.26

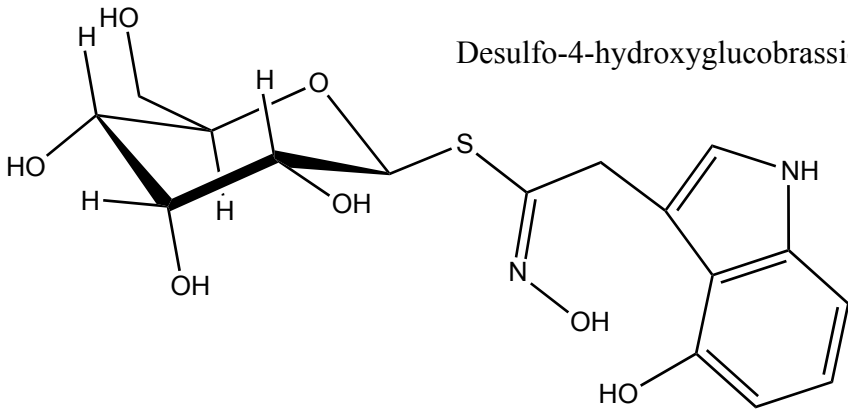


$C_{11}H_{19}NO_6S$
 Exact Mass: 293.09
 Mol. Wt.: 293.34

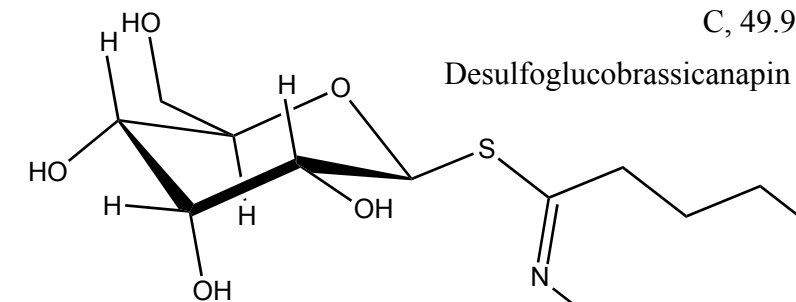
m/e: 293.09 (100.0%), 294.10 (12.8%), 295.09 (4.5%), 295.10
 (2.1%), 294.09 (1.2%)

C, 45.04; H, 6.53; N, 4.77; O, 32.73; S, 10.93

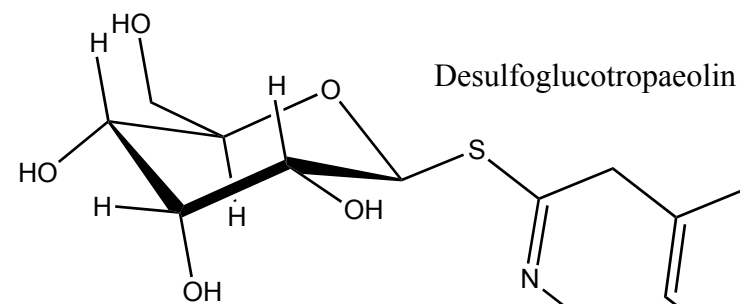
Desulfo-4-hydroxyglucobrassicin



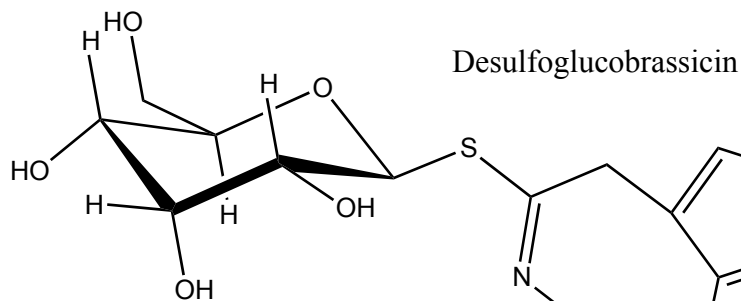
$C_{16}H_{20}N_2O_7S$
Exact Mass: 384.10
Mol. Wt.: 384.40
m/e: 384.10 (100.0%), 385.10 (19.6%), 386.09 (4.4%), 386.10 (1.7%), 386.11 (1.6%)
C, 49.99; H, 5.24; N, 7.29; O, 29.13; S, 8.34



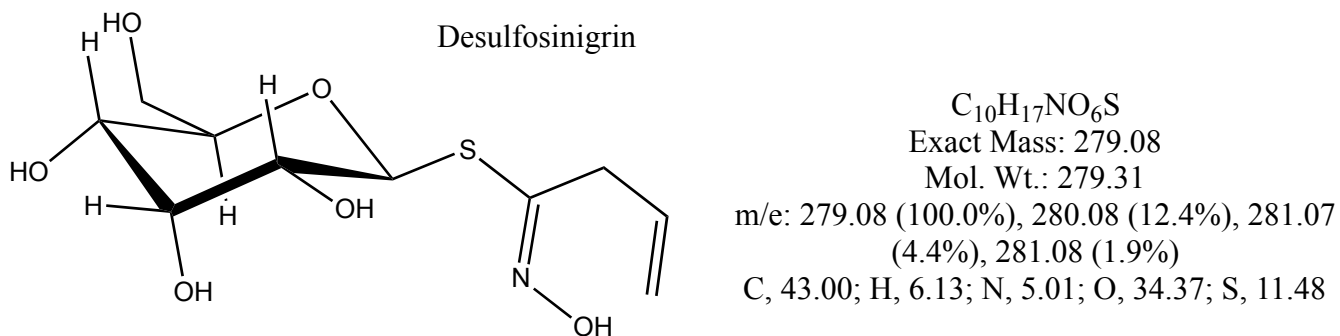
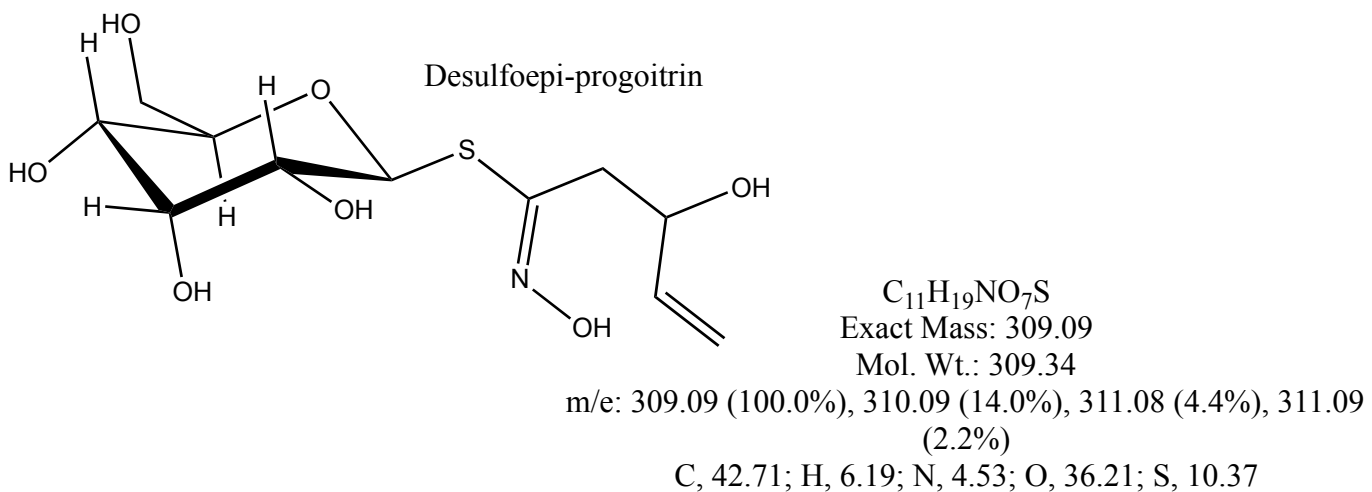
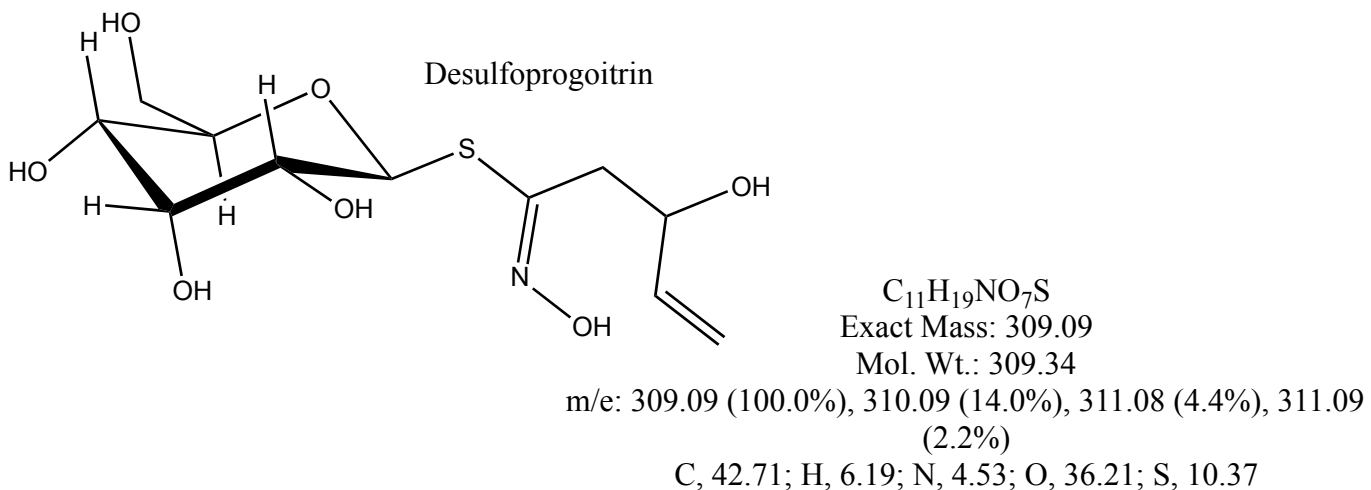
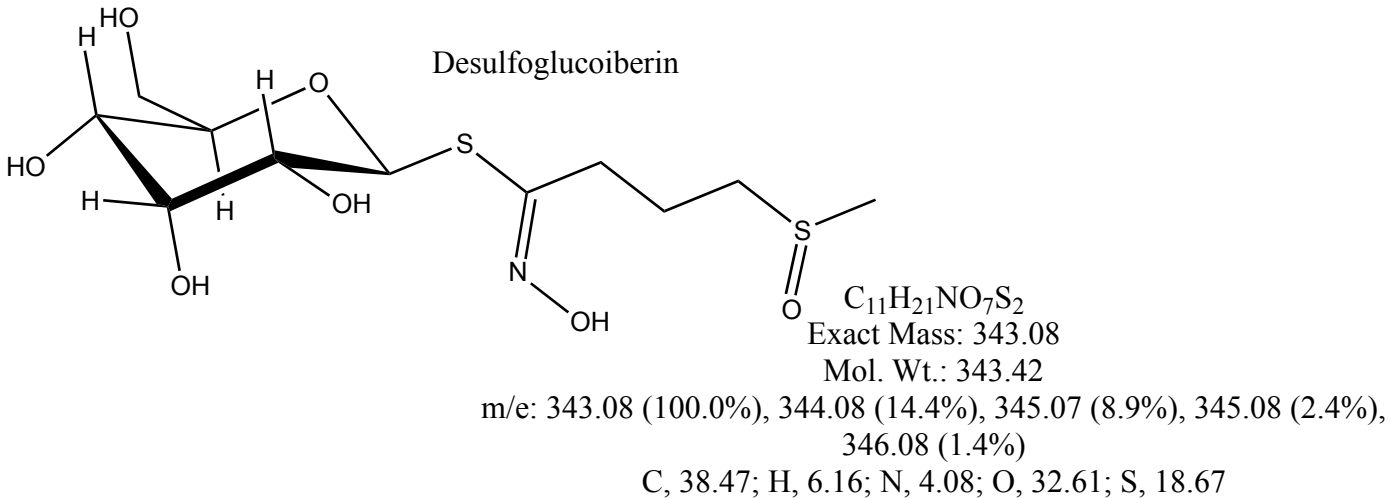
$C_{12}H_{21}NO_6S$
Exact Mass: 307.11
Mol. Wt.: 307.36
m/e: 307.11 (100.0%), 308.11 (14.7%), 309.10 (4.4%), 309.11 (1.4%)
C, 46.89; H, 6.89; N, 4.56; O, 31.23; S, 10.43

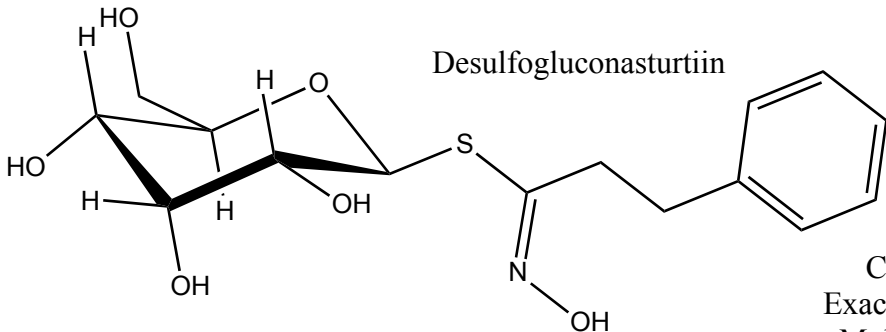


$C_{14}H_{19}NO_6S$
Exact Mass: 329.09
Mol. Wt.: 329.37
m/e: 329.09 (100.0%), 330.10 (16.1%), 331.09 (4.5%), 331.10 (2.5%), 330.09 (1.2%)
C, 51.05; H, 5.81; N, 4.25; O, 29.15; S, 9.74



$C_{16}H_{20}N_2O_6S$
Exact Mass: 368.10
Mol. Wt.: 368.40
m/e: 368.10 (100.0%), 369.11 (18.3%), 370.10 (4.6%), 370.11 (2.9%), 369.10 (1.5%)
C, 52.16; H, 5.47; N, 7.60; O, 26.06; S, 8.70





Desulfogluconasturtiin

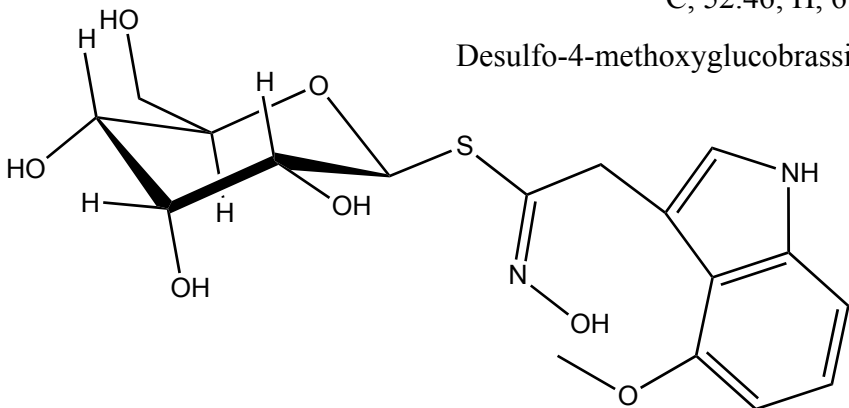
$C_{15}H_{21}NO_6S$

Exact Mass: 343.11

Mol. Wt.: 343.40

m/e: 343.11 (100.0%), 344.11 (18.1%), 345.10 (4.4%), 345.11 (1.4%), 345.12 (1.4%)

C, 52.46; H, 6.16; N, 4.08; O, 27.96; S, 9.34



Desulfo-4-methoxyglucobrassicin

$C_{17}H_{22}N_2O_7S$

Exact Mass: 398.11

Mol. Wt.: 398.43

m/e: 398.11 (100.0%), 399.12 (19.5%), 400.11 (4.4%), 400.12 (3.5%), 399.11 (1.5%)

C, 51.25; H, 5.57; N, 7.03; O, 28.11; S, 8.05